

NEW BUSINESS



1112 I Street, Suite 300
Sacramento, California 95814-2865
T 916.231.4141 or 800.537.7790 • F 916.231.4111
Maximizing Protection. Minimizing Risk. www.sdrma.org

January 18, 2022

Temecula-Elsinore-Anza-Murrieta Resource Conservation District
Ms. Rose Corona
President
Post Office Box 2078
Temecula, California California

Re: 2022-23 Property/Liability Early Budget Estimates

Dear Ms. Corona,

In preparation for the 2022-23 Property/Liability Program renewal on July 1, 2022, we are providing our program members with a preliminary renewal contribution estimate to help with budget planning for the 2022-23 fiscal year. We will continue to provide updates as we obtain renewal cost information from our program excess/reinsurers over the next few months. **Final contribution amounts will not be confirmed until we issue the 2022-23 renewal invoices in early June.**

Your agency's Property/Liability 2022-23 estimated contribution is **\$3,052 to \$3,244** based on the following assumptions:

- A 5% increase in operating budget from the 2021-22 program year
- Your agency's current exposures and losses currently on record with SDRMA, which include a 19.72% increase to the value of scheduled buildings and 14.17% increase to the value of scheduled contents *
- Pool reinsurance rate increases of 12.5% to 25% based on early estimates from our reinsurance brokers
- Credit Incentive Program (CIP) points for 2021-22 that your agency may have earned are not yet calculated and, therefore, not considered in this estimate

* Per board policy, SDRMA trends property values based on trending factors published by Marshall & Swift as set forth in the fourth quarter of the prior calendar year. Marshall & Swift trending factors can represent increases or decreases to property values to reflect inflation of construction, building materials and other costs associated with replacement or repair of damaged property. Trending factors apply to both buildings/structures and contents. Properties added to your policy during the current policy year or appraised within the last year will not be impacted by the trending factors until the next renewal for 2023-24.



This budget estimate is specifically provided to assist you with preliminary budgeting and is **NOT** a renewal indication, renewal quote, or a “not-to-exceed” contribution. The final renewal contribution amount may be in excess of this estimate depending on the changing conditions of the insurance market over the next few months. Since we do not have the 2022-23 renewal rates from the program excess/reinsurers, we recommend you budget towards the upper end of the range, plus any differences in exposure or losses which have not yet been reported to SDRMA.

Once we receive your agency’s 2022-23 Renewal Questionnaire in February, with updated exposure information, we will distribute an updated budget estimate. If you make any substantial changes to your policy over the next few months, and would like an updated contribution estimate, please contact our Finance Department at accounting@sdrma.org or 800.537.7790.

Members considering withdrawal from coverage with SDRMA for the 2022-23 program year are required to submit a **“Notice of Intent to Withdraw”** by **April 1, 2022** in accordance with SDRMA Bylaws and must have completed the initial three full program year commitment period. If you have any questions about withdrawing from our program, please contact Ellen Doughty at edoughty@sdrma.org or 800.537.7790.

On behalf of the SDRMA Board of Directors and our entire risk management team, we thank you for your continued participation in our programs.

Sincerely,
Special District Risk Management Authority

A handwritten signature in cursive script that reads "Laura S. Gill".

Laura S. Gill, ARM, ARM-P, CSDM
Chief Executive Officer

OLD BUSINESS

CDFW REPORTS: TEAM RCD – RIV FLOOD TRANSIENT MONITORING

TUCALOCA CREEK III

REPORT AREA I: LIST OF ALL HABITAT CREATION, RESTORATION, ENHANCEMENT, AND CONSERVATION PROJECT AREAS CURRENTLY BEING MANAGED BY PERMITTEE

SAWA acted as a contractor on this project, and will only report on activities and impacts performed by staff.

REPORT AREA II: DESCRIPTION OF THE HABITAT RESTORATION, ENHANCEMENT, AND CONSERVATION ACTIVITIES PERFORMED WITHIN EACH PROJECT AREA

Site visits conducted on:

Tuesday 1-4-22: A SAWA Lead Technician inspected Tualota Creek Phase III. The camp outside the boundary under a cottonwood cluster is active but no transient spotted. The transient camp in a drainage pipe appears inactive and no transients were sighted (see Homeless Point 1).

Wednesday 1-19-22: A SAWA Lead Technician inspected Tualota Creek Phase III. The camp outside the boundary under a cottonwood cluster is active. The transient camp in a drainage pipe remains inactive. (see Homeless Point 1).

Geographic location: The Tualota Creek Phase III site is located along a Riverside Flood Control drainage in the City of Murrieta near the intersection of Murrieta Hot Springs Road & Winchester Road.

PHOTOS

Photo Points:

Photo Point 1: 33.54654° -117.14110°

Photo Point 2: 33.54275° -117.14258°

Homeless Points:

Homeless Point 1: 33.54352° , -117.14156°



Photo Point 1: 1-19-2022



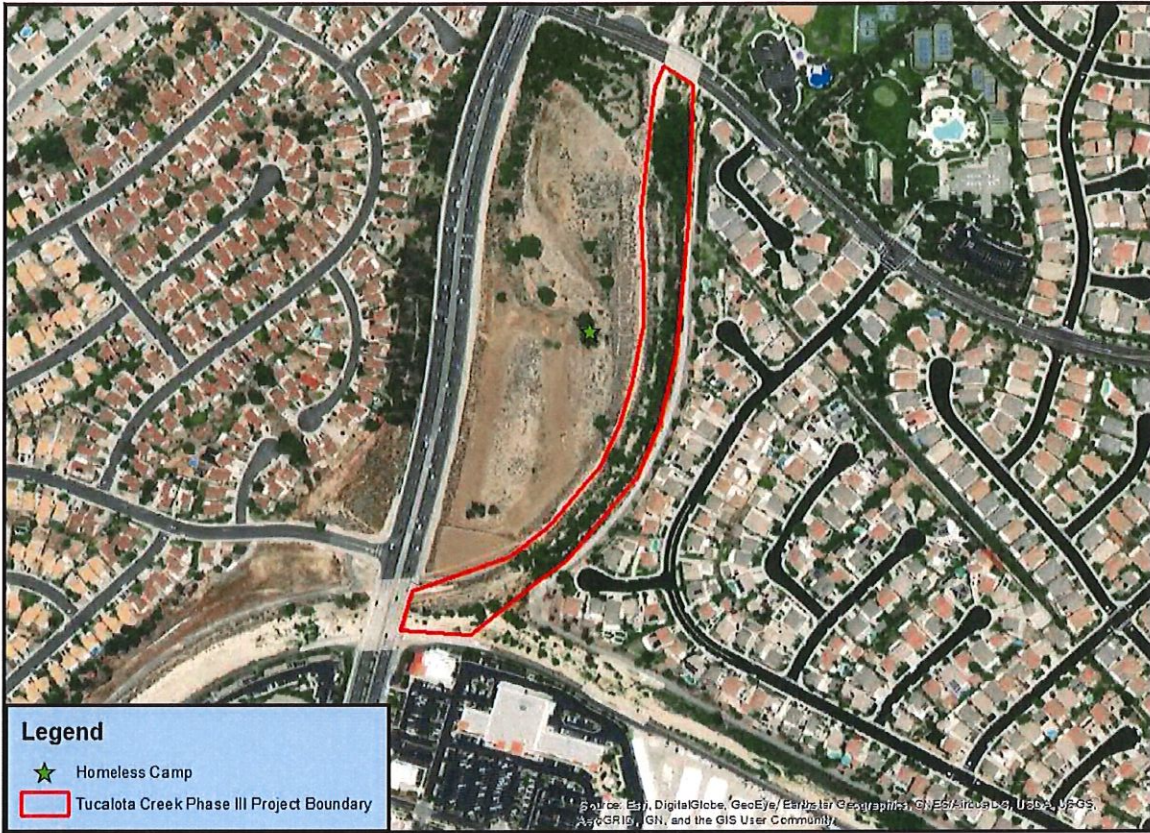
Photo Point 2: 1-19-2022



Homeless Point 1: 1-19-2022

MAP

Tucalota Creek III



Legend

★ Homeless Camp

□ Tucalota Creek Phase III Project Boundary



160 80 0 160 Meters

NAD 83
9-7-21 J.L.
Tucalota Creek III
Map produced by SAWA

CDFW REPORTS: TEAM RCD – RIV FLOOD TRANSIENT MONITORING

TEMECULA CREEK CHANNEL AD 159

REPORT AREA I: LIST OF ALL HABITAT CREATION, RESTORATION, ENHANCEMENT, AND CONSERVATION PROJECT AREAS CURRENTLY BEING MANAGED BY PERMITTEE

SAWA acted as a contractor on this project, and will only report on activities and impacts performed by staff.

REPORT AREA II: DESCRIPTION OF THE HABITAT RESTORATION, ENHANCEMENT, AND CONSERVATION ACTIVITIES PERFORMED WITHIN EACH PROJECT AREA

Site visits conducted on:

Tuesday 1-4-2022: A SAWA Lead Technician inspected Temecula Creek AD 159. Transient camp found near Walmart on Temecula Pkwy was washed out and no transient sighted (see homeless point 2). Camp near the Pechanga Pkwy Bridge is still active and transients were present (see homeless point 1). Camp located at homeless point 3 has become a trash dump and accumulated more trash. The camps at homeless points 4 & 5 remain active with transients present.

Geographic location: The Temecula Creek AD 159 site is located along a Riverside Flood Control drainage in the City of Temecula near the intersection of Wolf Store Rd and Butterfield Stage Rd.

PHOTOS

Photo Points:

Photo Point 1: -33.48449° -117.07126°

Photo Point 2: -33.47732° -117.10051°

Homeless Points:

Homeless Point 1: -33.47315° -117.12879°

Homeless Point 2: 33.47900° -117.09453°

Homeless Point 3: 33.47311°, -117.13014°

Homeless Point 4: 33.47288°, -117.13036°

Homeless Point 5: 33.47281°, -117.13059°





Photo Point 2: 1-4-2022



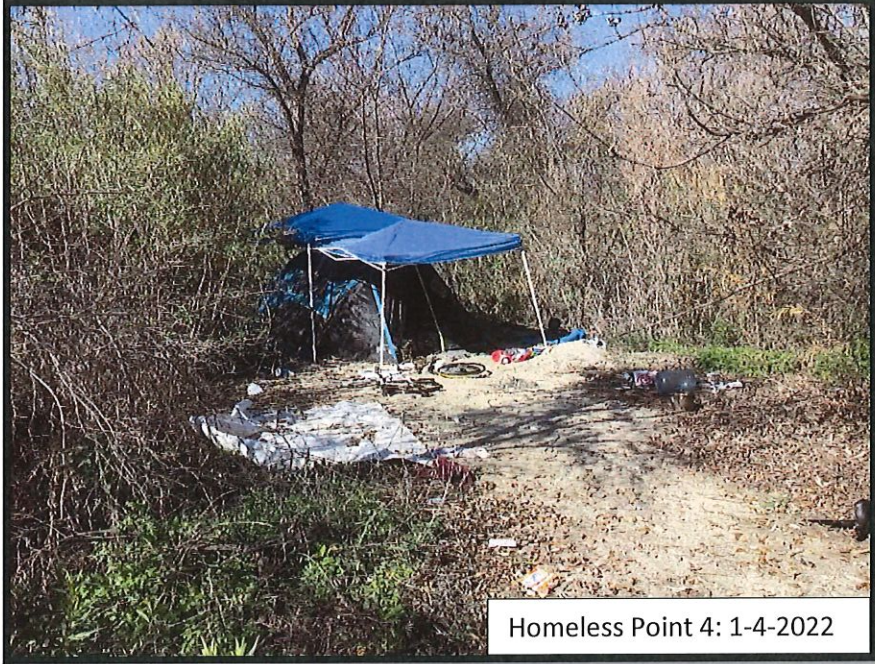
Homeless Point 1: 1-4-2022



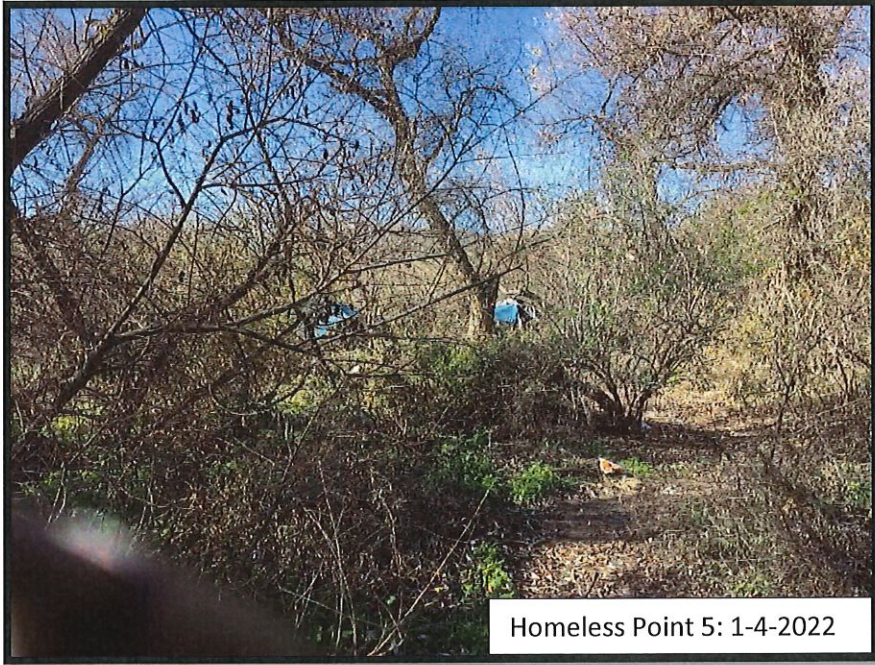
Homeless Point 2: 12-21-2021



Homeless Point 3: 1-4-2022



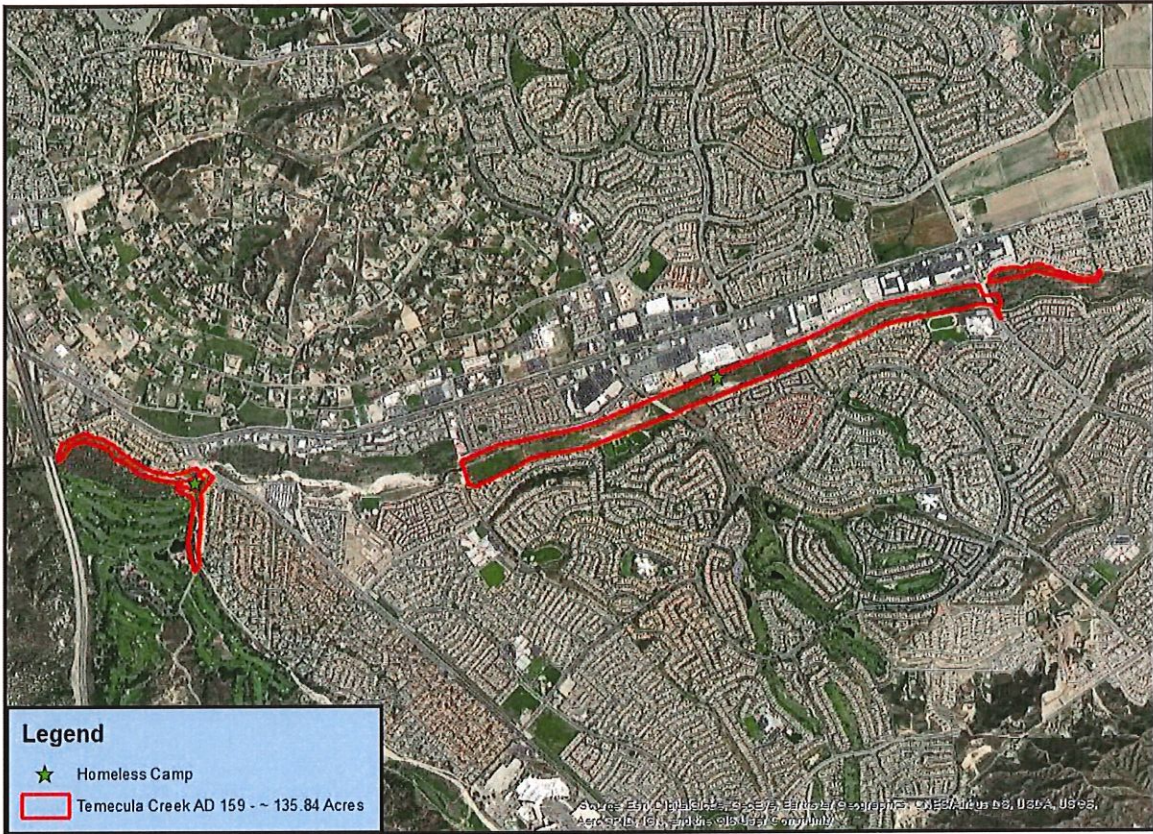
Homeless Point 4: 1-4-2022



Homeless Point 5: 1-4-2022

MAP

Temecula Creek AD 159



Legend

- ★ Homeless Camp
- Temecula Creek AD 159 - ~ 135.84 Acres



1,000 500 0 1,000 Meters

NAD 83
9-2-21 JL
Temecula Creek AD 159
Map produced by SAWA

CDFW REPORTS: TEAM RCD – RIV FLOOD TRANSIENT MONITORING

SANTA GERTRUDIS CHANNEL

REPORT AREA I: LIST OF ALL HABITAT CREATION, RESTORATION, ENHANCEMENT, AND CONSERVATION PROJECT AREAS CURRENTLY BEING MANAGED BY PERMITTEE

SAWA acted as a contractor on this project, and will only report on activities and impacts performed by staff.

REPORT AREA II: DESCRIPTION OF THE HABITAT RESTORATION, ENHANCEMENT, AND CONSERVATION ACTIVITIES PERFORMED WITHIN EACH PROJECT AREA

Site visits conducted on:

Tuesday 1-4-2022: A SAWA Lead Technician inspected Santa Gertrudis Creek. The large transient camp near the high school is flooded and inactive. The transient camp near the Margarita Rd. Bridge remains inactive. The transient camp across from Pep Boys is still active but no transient was present (see homeless point 2). The camp under Ynez Rd Bridge is washed out and appears inactive (see homeless point 3).

Wednesday 1-19-2022: A SAWA Lead Technician inspected Santa Gertrudis Creek. A new transient camp was found under the General Kearny Rd. Bridge and a transient was present (see homeless point 1). The transient camp across from Pep Boys is still active but no transients were detected (see homeless point 2). The camp under Ynez Rd Bridge is still active but no transient was detected (see homeless point 3).

Geographic location: The Santa Gertrudis Creek site is located along a Riverside Flood Control drainage in the City of Murrieta starting from the intersection of Joseph Rd and Nicolas Rd and ending at the intersection of Winchester Rd and Enterprise Cir N.

PHOTOS

Photo Points:

Photo point 1: 33.53552°, -117.15136°

Photo point 2: 33.52762°, -117.15834°

Homeless points:

Homeless Point 1: 33.53907°, -117.13428°

Homeless Point 2: 33.53030°, -117.15574°

Homeless Point 3: 33.52551°, -117.16122°





Photo Point 2: 1-19-2022



Homeless Point 1: 1-19-2022



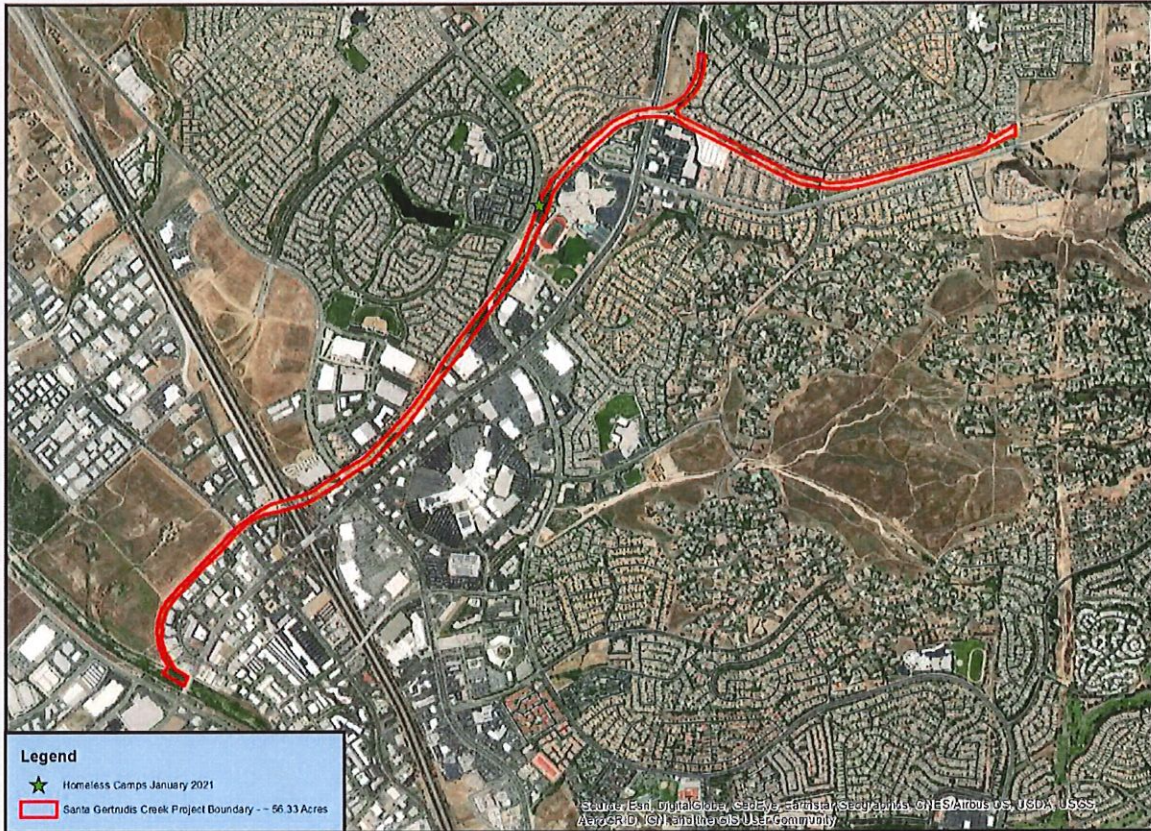
Homeless Point 2: 1-19-2022



Homeless Point 3: 1-19-2022

MAP

Santa Gertrudis Creek



500 250 0 500 Meters

NAD 83
2-9-21 JL
Santa Gertrudis Creek - Homeless
Map produced by SAWA

CDFW REPORTS: TEAM RCD – RIV FLOOD TRANSIENT MONITORING

HELASH

REPORT AREA I: LIST OF ALL HABITAT CREATION, RESTORATION, ENHANCEMENT, AND CONSERVATION PROJECT AREAS CURRENTLY BEING MANAGED BY PERMITTEE

SAWA acted as a contractor on this project, and will only report on activities and impacts performed by staff.

REPORT AREA II: DESCRIPTION OF THE HABITAT RESTORATION, ENHANCEMENT, AND CONSERVATION ACTIVITIES PERFORMED WITHIN EACH PROJECT AREA

Site visits conducted on:

Tuesday 1-4-2022: A SAWA Lead Technician inspected Helash. No transients were detected on site on this date.

Wednesday 1-19-2022: A SAWA Lead Technician inspected Helash. No transients were detected on site on this date.

Geographic location: : The Helash mitigation site is located along a Riverside Flood Control drainage in the City of Wildomar near the intersection of Clinton Keith Road & Grand Avenue.

PHOTOS

Photo Points:

Photo Point 1: 33.58772° -117.25426°

Photo Point 2: 33.58575° -117.25357°

Photo Point 3: 33.58662° -117.25465°

Photo Point 4: 33.58808° -117.25668°

Photo Point 5: 33.58869° -117.25784°

Photo Point 6: 33.58955° -117.25670°



Photo Point 1: 1-19-2022



Photo Point 2: 1-19-2022



Photo Point 3: 1-19-2022



Photo Point 4: 1-19-2022



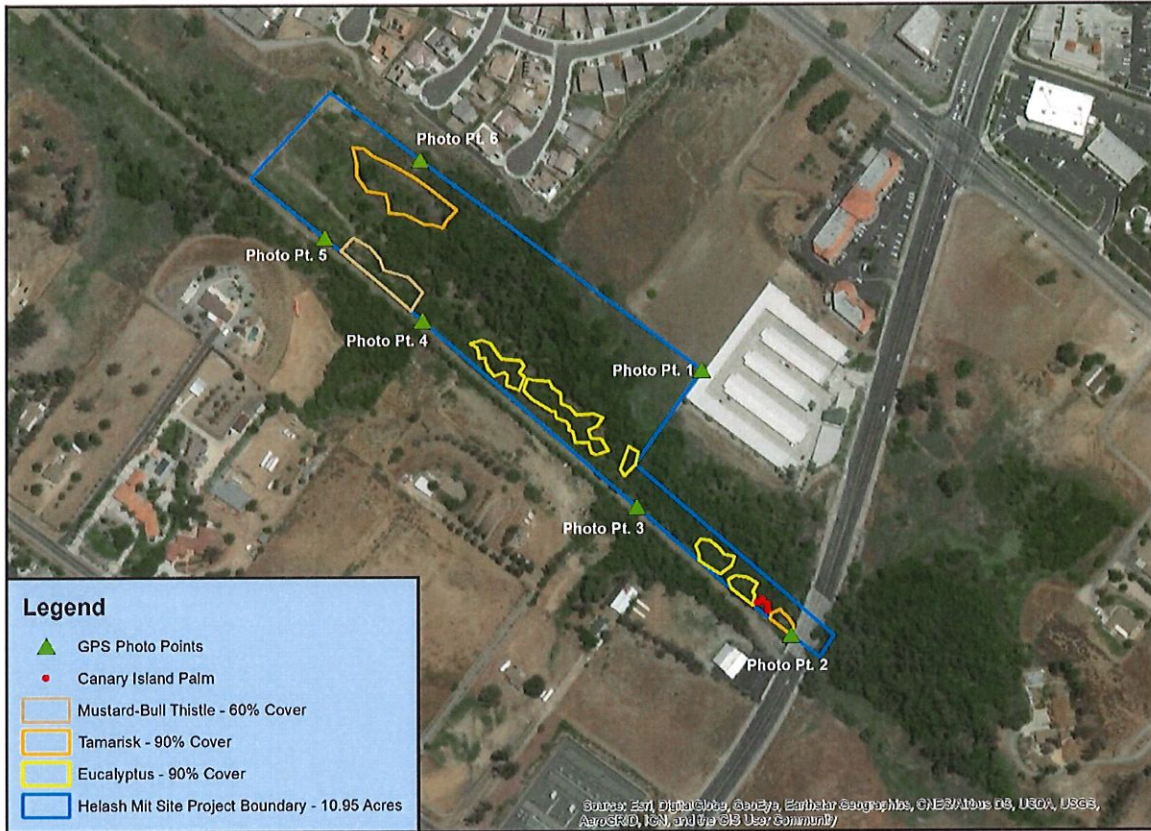
Photo Point 5: 1-19-2022



Photo Point 6: 1-19-2022

MAP

Helash Mit Site



Legend

- ▲ GPS Photo Points
- Canary Island Palm
- Mustard-Bull Thistle - 60% Cover
- Tamarisk - 90% Cover
- Eucalyptus - 90% Cover
- Helash Mit Site Project Boundary - 10.95 Acres

Source: Esri, DigitalGlobe, GeoEye, Earthstar Geographics, CNES/Airbus DS, USDA, USGS, AeroGRID, IGN, and the GIS User Community



NAD 83
7-18-18 JL
Helash Mit Site
Map produced by SAWA

CDFW REPORTS: TEAM RCD – RIV FLOOD TRANSIENT MONITORING

HILDY

REPORT AREA I: LIST OF ALL HABITAT CREATION, RESTORATION, ENHANCEMENT, AND CONSERVATION PROJECT AREAS CURRENTLY BEING MANAGED BY PERMITTEE

SAWA acted as a contractor on this project, and will only report on activities and impacts performed by staff.

REPORT AREA II: DESCRIPTION OF THE HABITAT RESTORATION, ENHANCEMENT, AND CONSERVATION ACTIVITIES PERFORMED WITHIN EACH PROJECT AREA

Site visits conducted on:

Tuesday 1-4-2022: A SAWA Lead Technician inspected Hildy. No transients were detected on site on this date.

Wednesday 1-19-2022: A SAWA Lead Technician inspected Hildy. No transients were detected on site on this date.

Geographic location: The Hildy site is located along a Riverside Flood Control drainage in the City of Wildomar near the intersection of Clinton Keith Rd & Palomar St.

PHOTOS

Photo Points:

Photo Point 1: 33.58476° -117.25226°

Photo Point 2: 33.58424° -117.25113°

Photo Point 3: 33.58272° -117.24912°

Photo Point 4: 33.58165° -117.24807°



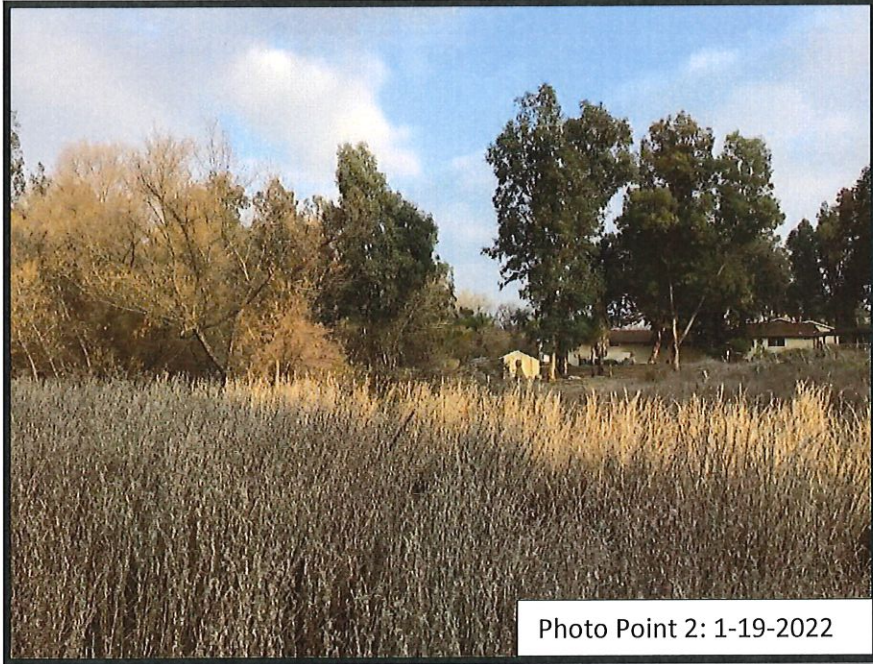


Photo Point 2: 1-19-2022

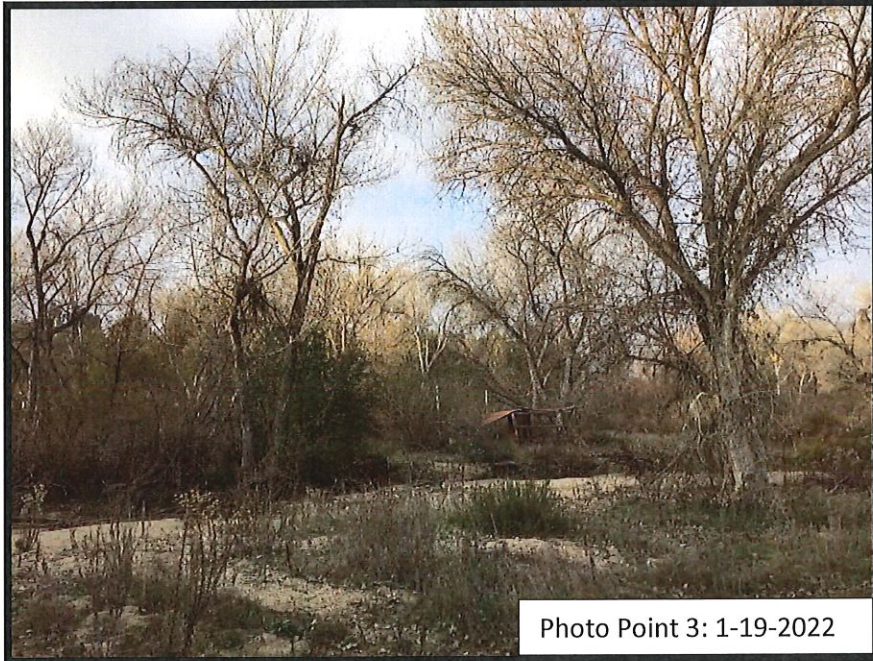


Photo Point 3: 1-19-2022

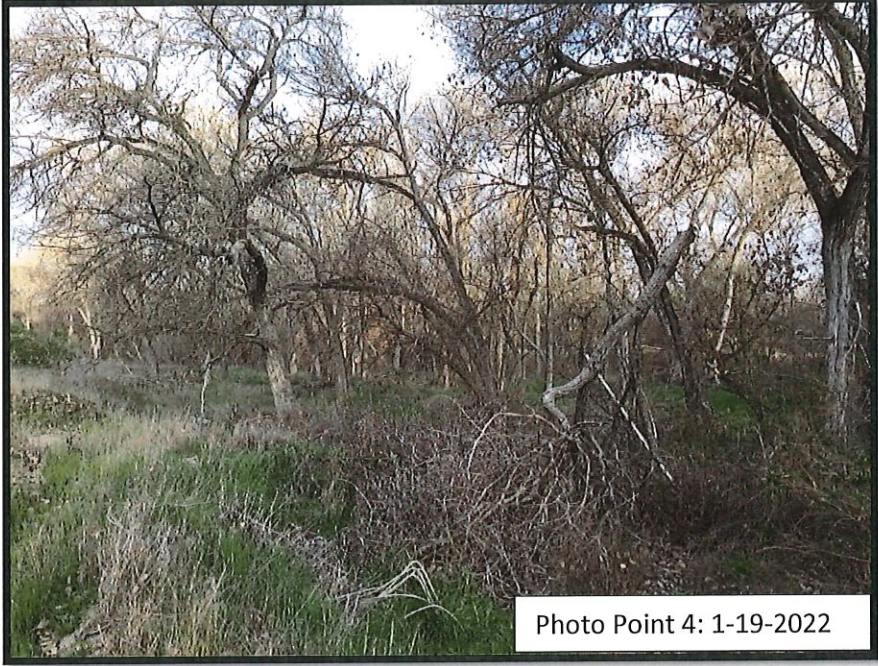
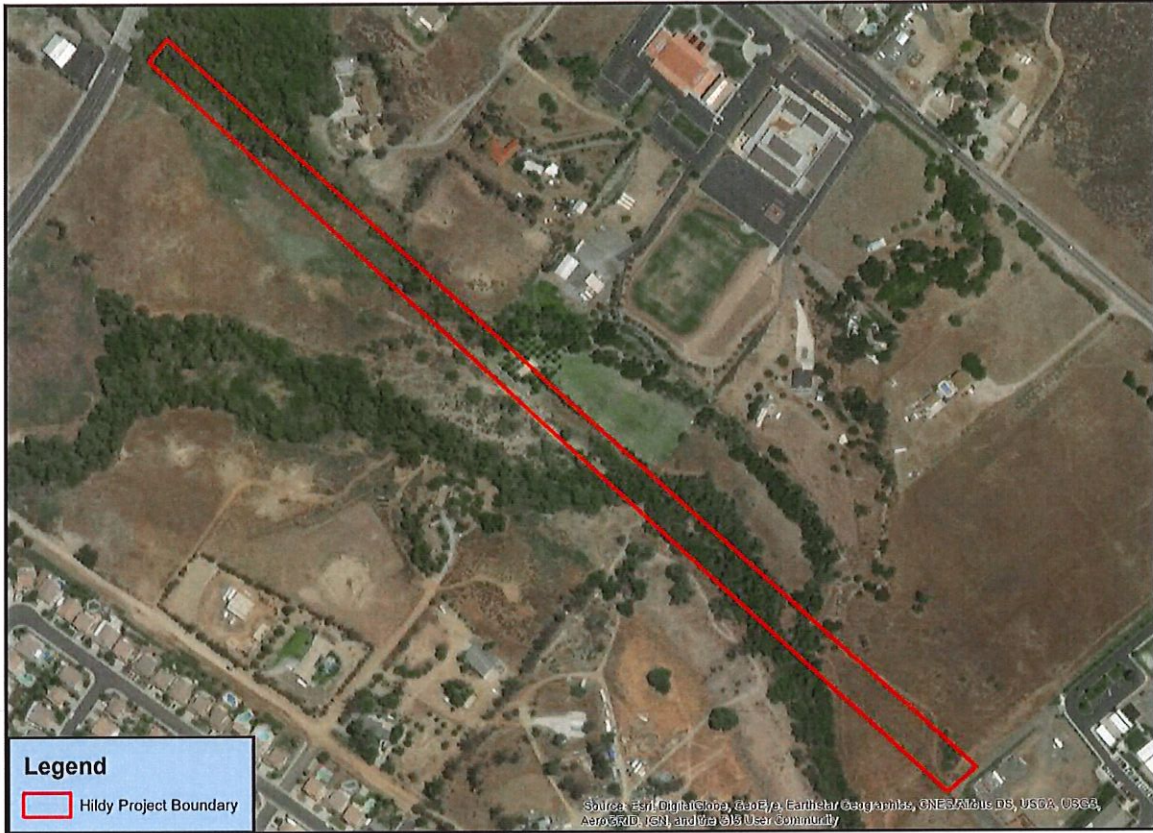


Photo Point 4: 1-19-2022

MAP

Hildy



Legend
[Red Line] Hildy Project Boundary



175 87.5 0 175 Meters



NAD 83
6-26-18 JL
Hildy
Map produced by SAWA

CDFW REPORTS: TEAM RCD – RIV FLOOD TRANSIENT MONITORING

MURRIETA CREEK LINE F

REPORT AREA I: LIST OF ALL HABITAT CREATION, RESTORATION, ENHANCEMENT, AND CONSERVATION PROJECT AREAS CURRENTLY BEING MANAGED BY PERMITTEE

SAWA acted as a contractor on this project, and will only report on activities and impacts performed by staff.

REPORT AREA II: DESCRIPTION OF THE HABITAT RESTORATION, ENHANCEMENT, AND CONSERVATION ACTIVITIES PERFORMED WITHIN EACH PROJECT AREA

Site visits conducted on:

Tuesday 1-4-2022: A SAWA Lead Technician inspected Murrieta Creek Line F. No transients were detected on site on this date.

Wednesday 1-19-2022: A SAWA Lead Technician inspected Murrieta Creek Line F. No transients were detected on site on this date.

Geographic location: The Murrieta Creek Line F site is located along a Riverside Flood Control drainage in the City of Murrieta near the intersection of Kalmia St & Washington Ave.).

PHOTOS

Photo Points:

Photo Point 1: 33.55698° -117.21832°

Photo Point 2: 33.55622° -117.21901°



MAP

Murrieta Creek Line F



Legend

- ▲ GPS Photo Points
- Tamarisk - 5% Cover
- Murrieta Creek Line F Boundary - 1.12 Acres

Source: Esri, DigitalGlobe, GeoEye, Earthstar Geographics, CNES/Airbus DS, USDA, USGS, AeroGRID, IGN, and the GIS User Community



NAD 83
8-1-18 JL
Murrieta Creek Line F
Map produced by SAWA

CDFW REPORTS: TEAM RCD – RIV FLOOD TRANSIENT MONITORING

PALOMAR-CORYDON CHANNELS

REPORT AREA I: LIST OF ALL HABITAT CREATION, RESTORATION, ENHANCEMENT, AND CONSERVATION PROJECT AREAS CURRENTLY BEING MANAGED BY PERMITTEE

SAWA acted as a contractor on this project, and will only report on activities and impacts performed by staff.

REPORT AREA II: DESCRIPTION OF THE HABITAT RESTORATION, ENHANCEMENT, AND CONSERVATION ACTIVITIES PERFORMED WITHIN EACH PROJECT AREA

Site visits conducted on:

Tuesday 1-4-2022: A SAWA Lead Technician inspected Palomar-Corydon Channels. No transients were detected on site on this date.

Wednesday 1-19-2022: A SAWA Lead Technician inspected Palomar-Corydon Channels. No transients were detected on site on this date.

Geographic location: The Palomar-Corydon Channels site is located along a Riverside Flood Control drainage in the City of Lake Elsinore near the intersection of Palomar Street & Old Coach Road.

PHOTOS

Photo Points:

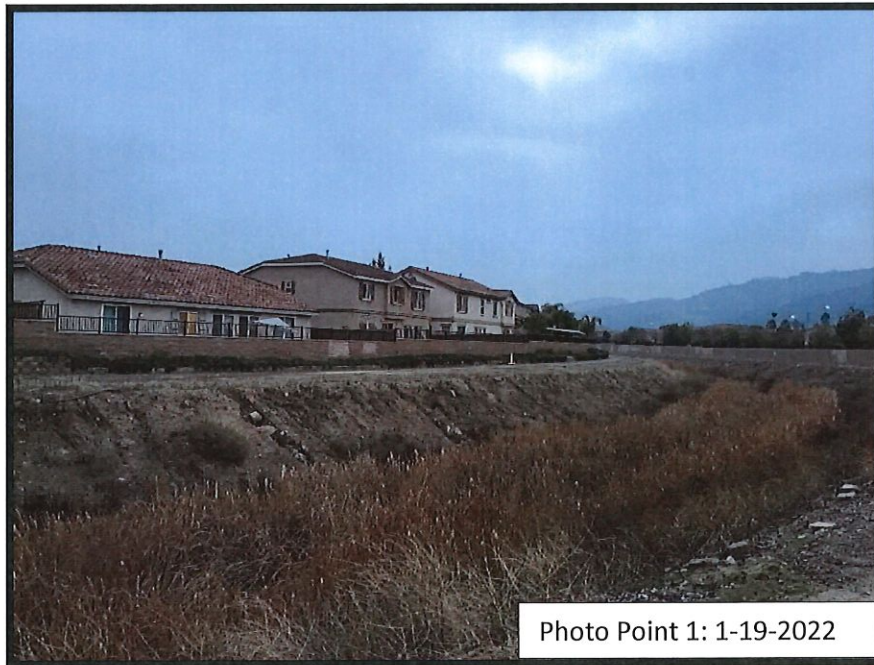
Photo Point 1: 33.62411° -117.30840°

Photo Point 2: 33.62330° -117.30835°

Photo Point 3: 33.62167° -117.30680°

Photo Point 4: 33.62054° -117.30490°

Photo Point 5: 33.61965° -117.30559°



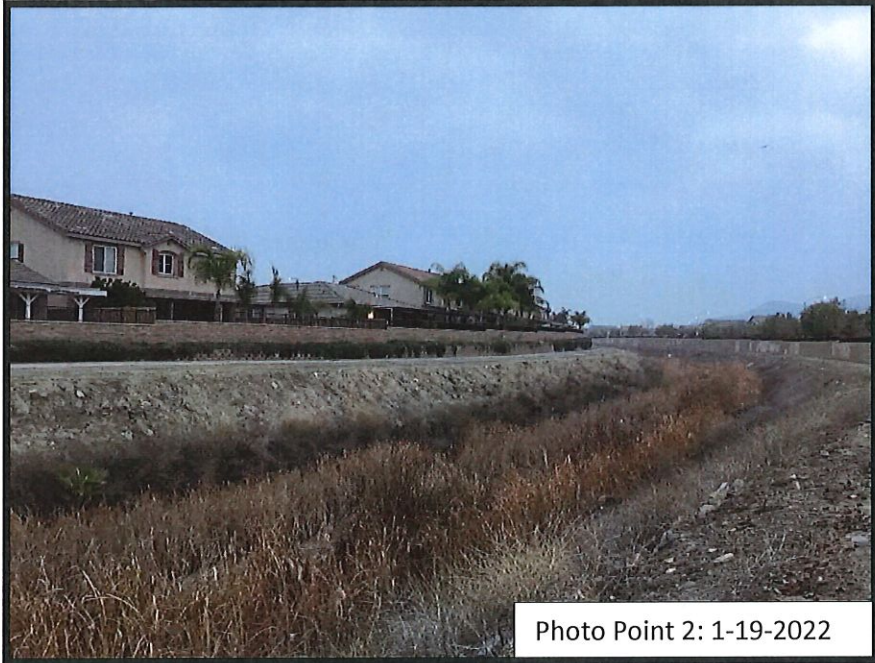


Photo Point 2: 1-19-2022



Photo Point 3: 1-19-2022



Photo Point 4: 1-19-2022



Photo Point 5: 1-19-2022

MAP

Palomar-Corydon Channels



150 75 0 150 Meters

NAD 83
7-18-10 JL
Palomar-Corydon Channels
Map produced by SAWA

CDFW REPORTS: TEAM RCD – RIV FLOOD TRANSIENT MONITORING

TUCALOTA CREEK I & II

REPORT AREA I: LIST OF ALL HABITAT CREATION, RESTORATION, ENHANCEMENT, AND CONSERVATION PROJECT AREAS CURRENTLY BEING MANAGED BY PERMITTEE

SAWA acted as a contractor on this project, and will only report on activities and impacts performed by staff.

REPORT AREA II: DESCRIPTION OF THE HABITAT RESTORATION, ENHANCEMENT, AND CONSERVATION ACTIVITIES PERFORMED WITHIN EACH PROJECT AREA

Site visits conducted on:

Tuesday 1-4-2022: A SAWA Lead Technician inspected Tocalota Creek 1 & 2. No transients were detected on site on this date.

Wednesday 1-19-2022: A SAWA Lead Technician inspected Tocalota Creek 1 & 2. No transients were detected on site on this date.

Geographic location: The Tocalota Creek 1 & 2 site is located along a Riverside Flood Control drainage in the City of Murrieta near the intersection of Murrieta Hot Springs Road & Winchester Road.

PHOTOS

Photo Points:

Photo Point 1: 33.55500° -117.13534°

Photo Point 2: 33.55620° -117.13522°

Photo Point 3: 33.55075° -117.13722°





Photo Point 2: 1-19-2022



Photo Point 3: 1-19-2022

MAP

Tucalota Creek 1 & 2

